

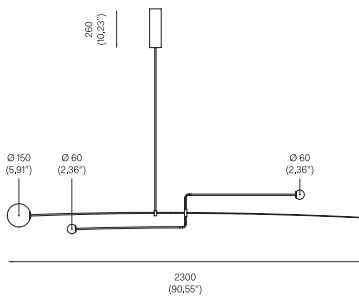


MOBILE CHANDELIER 3, 2008

Black Patinated Brass.
Mouth blown opaline spheres.
Pendant rod length to order.

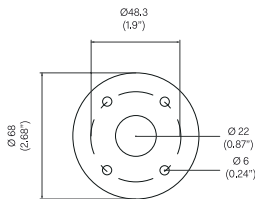


OVERALL DIMENSIONS



BACKPLATE DIMENSIONS

Mounting screws not included
6mm countersunk screw recommended



MATERIALS AND FINISHES



MA-MC3-B
Black Patinated



Custom Patina available

BULB SPECIFICATIONS

Integrated LED, 9W for Ø 150mm sphere 800lm / 2700K

Integrated LED, 3W for Ø 60mm sphere 350lm / 2700K

PRODUCT SPECIFICATIONS

Maximum wattage: 16W
120V / 240V dimmable 0~10Vdc or 10V PWM signal or resistance.
Product weight: 15kg

Please supply required drop length of fixture, measured from the ceiling to bottom of fitting at time of order.

Minimum total drop length 527mm.
Maximum total drop length 2417mm.
Maximum total drop length with extension 4437mm.

Please allow 25mm tolerance of drop length.

120V version supplied with paintable junction box cover.

Due to the handmade nature of this product dimensions may vary up to 10% for balancing purposes.

CLEANING INSTRUCTIONS

Before cleaning, lighting fixtures must be turned off and unplugged from mains electricity. Whilst cleaning please take care and use the gloves provided.

Black patinated: Use a dry soft dust cloth and gently go over marks until clean. The brass patina is achieved through an artisanal technique of applying pigments by hand during a hot patination process. Through this alchemic process, the brass is transformed whilst retaining the material's inherent qualities. It will mature and change overtime. The manner and speed in which it will change will depend on the environment, handling and the level and frequency of maintenance. Verdigris can also appear when the copper in the brass begins to oxidise.

Opaline Glass: Remove the opaline glass from the product. Using a lightly damp cloth, clean only the outside of the sphere. Only put the glass sphere back on the product once it is fully dry.